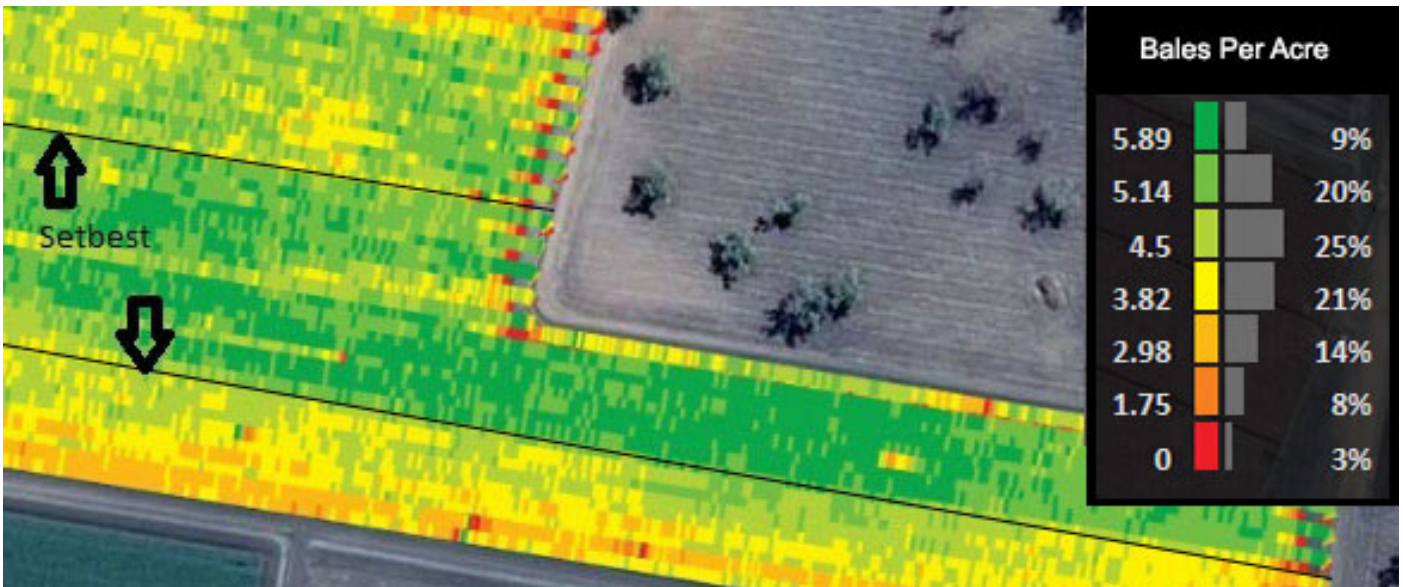


YIELD MAP

Broadacre

Setbest Rescues Cotton



The 2014 cotton yield data has become available and this has shown dramatic responses to Setbest in terms of the stress relief capacity of this product.

Hormone damage is very common in cotton. When Rob Clark's crop at Quirrindi suffered from hormone damage, the anticipated yield loss was so great they considered ploughing the crop in. After consultation, they instead opted to try the Setbest as a rescue agent.

Setbest is used as a resilience and growth foliar throughout cropping cycles and is getting growing recognition for its ability to rescue damaged crops.

The rescuing mechanism of Setbest to the cotton crop was significant. It took the crop from a write-off to the second highest yielding crop in the district.

The yield map showed a clear yield gain of up to 5 bales of cotton/ha compared to the strips left untreated.

These same repeatable results have been shown across diverse crops including grapes, potatoes and Lucerne, demonstrating the rescue mechanism of Setbest.

Setbest proves to be both effective in field and also offers return on investment. Even with the relatively low historic cotton price, there was a \$50 return on every dollar spent on Setbest.

Yield mapping technology is greatly assisting the documentation of these results giving growers profitable solutions with all the data stored on the John Deere web site.



Rob Clark at Quirrindi took his cotton crop from a write-off to the second highest yielding in the district using Petrik Setbest.

